

Use of Biometric Device - MANTRA MFS100

Note: All Browsers should be up to date.

Download link for Mantra RD Service Setup.

Registered device service of MFS100 is fully compatible with latest Aadhaar Authentication API 2.0 (rev 1).

Registered device service Setup for MFS100 is available on our download portal

<http://download.mantratecapp.com/Forms/DownloadFiles>.

The screenshot shows a web browser window with the address bar displaying "Not secure | download.mantratecapp.com/forms/downloadfiles". The website header features the "MANTRA" logo and navigation links for "HOME", "DOWNLOAD", "WEB DEMO", and "LOGIN". The main content area is titled "Download" and includes a blue banner for "MANTRA PRODUCTS". Below this, a descriptive paragraph states: "MANTRA RD Service (Aadhaar auth API 2.0 and E-Kyc API 2.1 compliance), MFS100 Driver and MFS100 Client service (Aadhaar Auth API 1.6 compliance) setup including pre-requisites and test application".

The download options are organized into four colored boxes:

- WINDOWS Download MANTRA RD Service** (Green box): Includes "[Aadhaar auth API 2.0 and E-Kyc API 2.1 compliance (also download and install driver setup)]", "Download User Manual", and "Download RD Service".
- WINDOWS Download MFS100 Driver** (Blue box): Includes "Download MFS100 Driver" and "Download MFS100 Driver - Windows 10".
- WINDOWS Download MFS100 Client Service** (Yellow box): Includes "[Aadhaar auth API 1.6 compliance]", "Download User Manual", and "Download MFS100 Client Service".
- ANDROID Download MANTRA RD Service & Management Client** (Red box): Includes "[Aadhaar auth API 2.0 and E-Kyc API 2.1 compliance]", "Download User Manual", "Download Mantra RD Service", and "Download Mantra Management Client".

Install Mantra RD Service & MFS100 Driver Setup.

Public to L0 Conversion (MFS100 Registered Device)

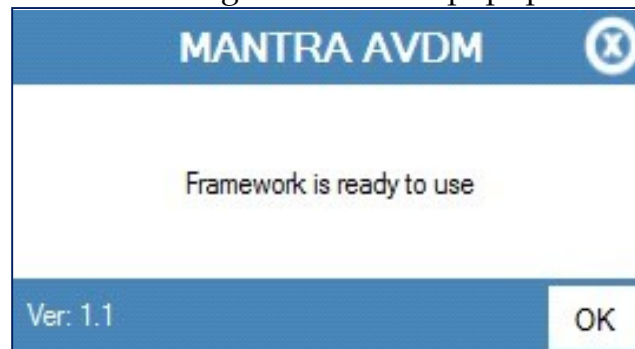
When RD Service will detect public device then it will convert it into registered device and user will be notified again with success response by RD Service.

After that you need to unplug and plug your device.



Once registered MFS100 device will be plugged to the system, RD service will detect it automatically and validate on Mantra's Management Server.

Once validation completed then it will generate below popup for user information.

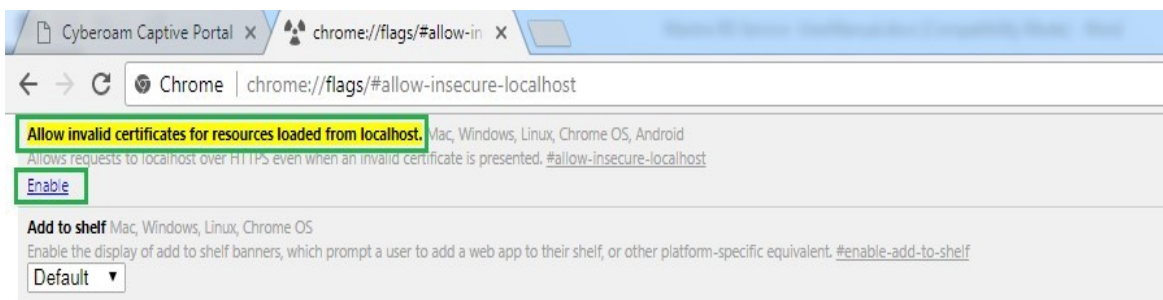


Browser Configuration for Web RD Test

1) Chrome

Open chrome browser and write below in url and click on Enable “Allow invalie certificates for resources loaded from localhost” and then click “RELAUNCH NOW”

chrome://flags/#allow-insecure-localhost



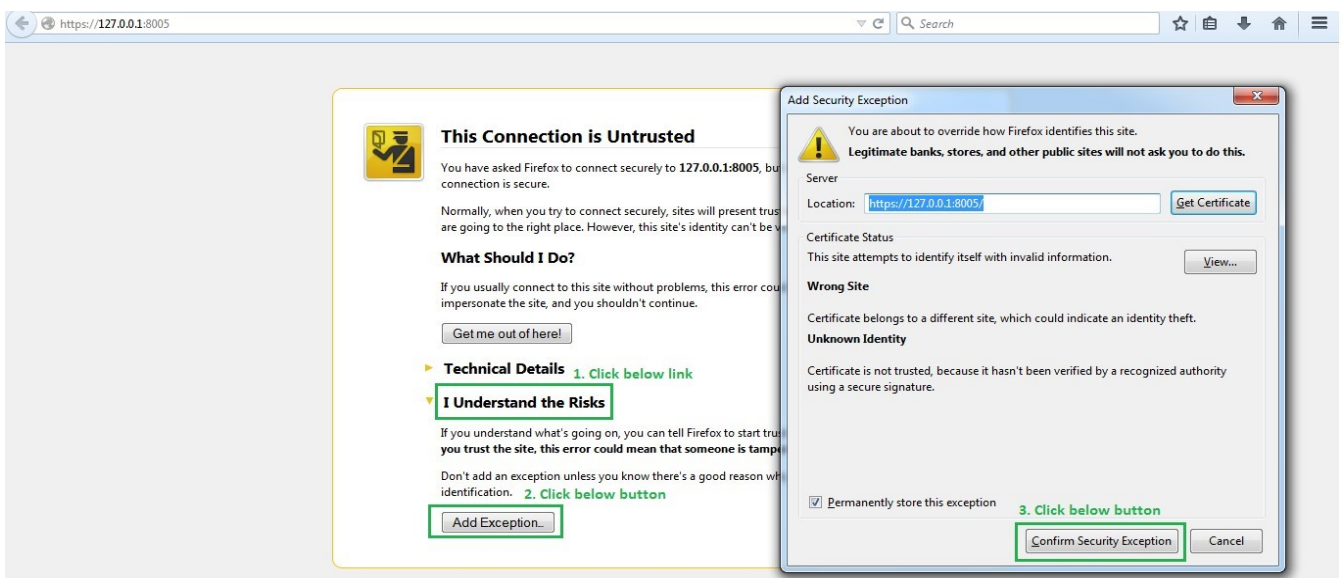
Your changes will take effect the next time you relaunch Google Chrome.

RELAUNCH NOW

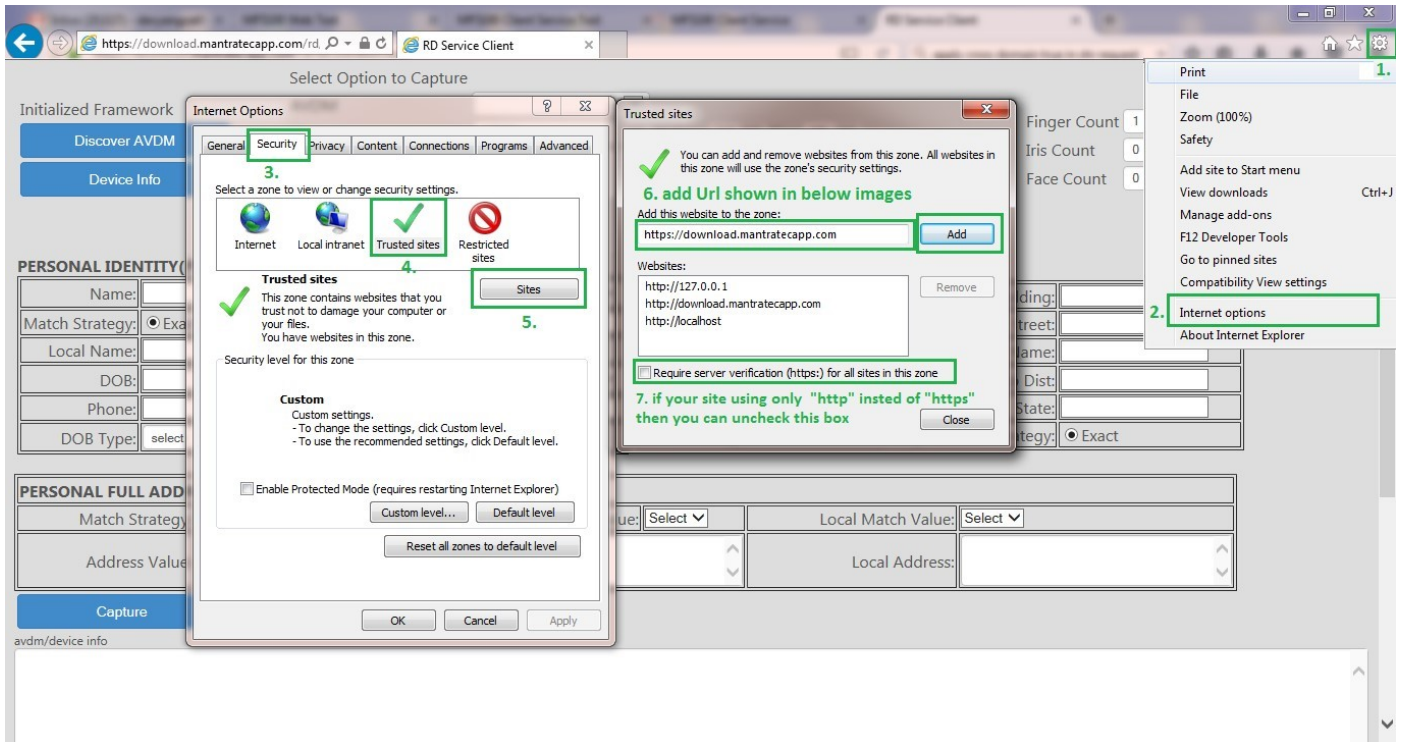
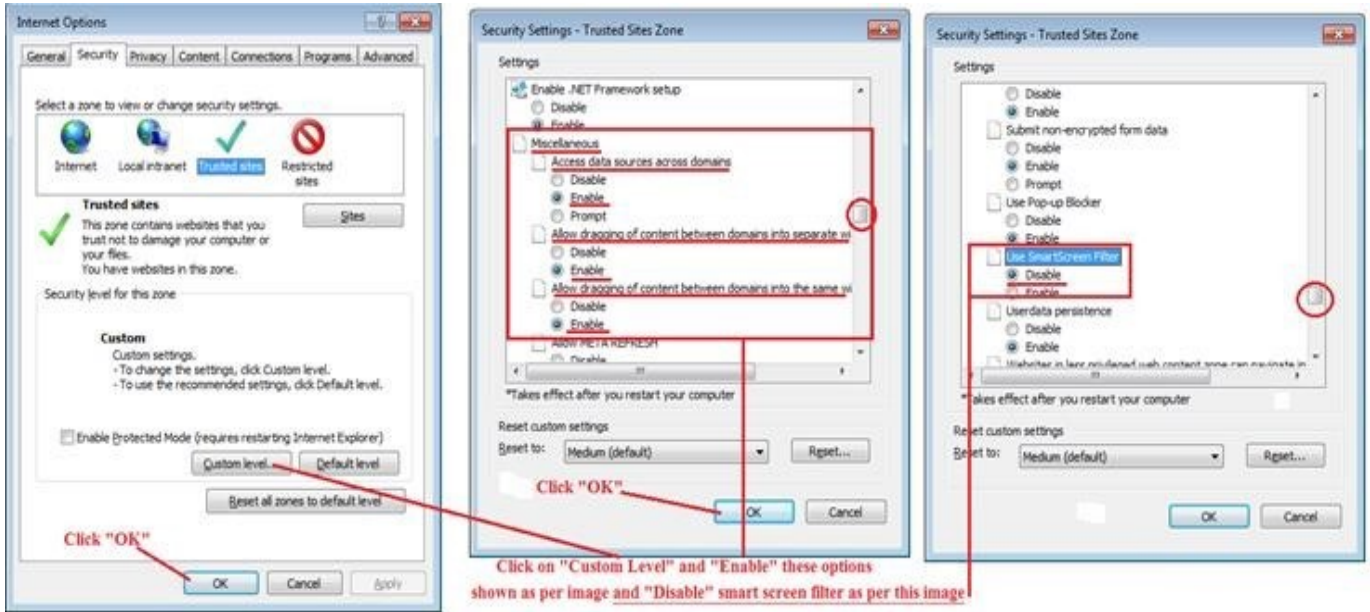
2) Firefox

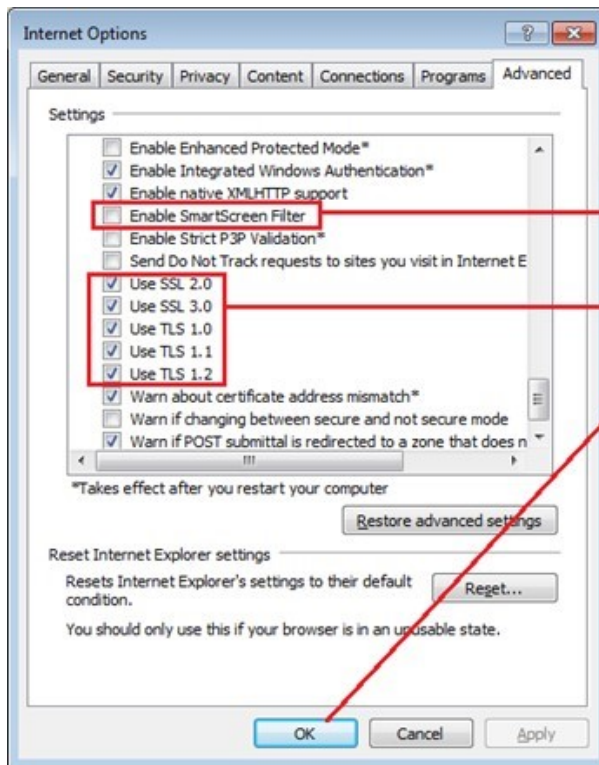
Open Firefox browser and write below in url and click on “I Understand the Risks” ,click “Add Exception” ,it will open Add Security Exception popup and then click “Confirm Security Exception” .

https://127.0.0.1:8005



3) Internet Explorer





Uncheck this check box if it is checked.

Check all these check box if it is unchecked

Click "OK"

Restart "Internet Explorer" browser and then test again for capture finger